

ART 1300-02: INTRODUCTION TO ART (non-majors) Tuesdays & Thursdays, Hooper-Schaefer 149 @ 2:00
 Baylor University, Spring 2008 :: Dr. Karen Pope, Lewis Art Bldg. 159, Karen_Pope@Baylor.edu (on campus T, TH)

COURSE OBJECTIVES:

- Explore the richness of the art world
- Examine processes—the making of art
- Develop a vocabulary for discussing art
- Grasp tactics for interpreting works of art
- Understand art as communication
- Get to know some major artists and their work
- Cover material as scheduled

TEXT: Bruce Cole, *THE INFORMED EYE* [bookstore, Amazon, or Blackboard .pdf files]

GRADING—Points System, total possible 265, 90% = A, 87% = B+, 80% = B, etc.:

80	4 quizzes
20	1 in-class report using PowerPoint
30	3 video notes, typed (each ONE page max: hardcopy + submit to Turnitin)
50	1 museum worksheet
35	1 midterm exam
50	1 final exam

ATTENDANCE POLICY & ADVICE for SUCCESS:

Daily attendance expected and necessary for success

Bring book, take notes, participate in discussion

An absence is an absence, whatever the explanation. 3 absences will be criteria for Registrar's deficiency report.

Personal emergencies should be reported to University Chaplain who will communicate with your instructors: 710-3517

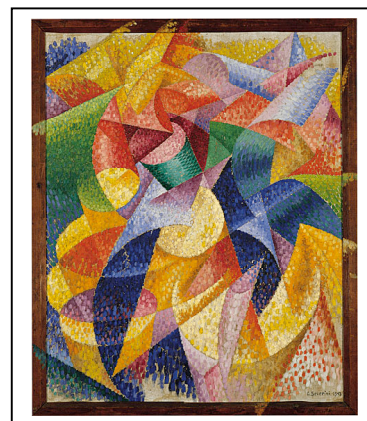
Consult syllabus, read ahead, take notes, participate, review weekly, study together, meet deadlines, check e-mail often

GOOD ADDITIONAL SOURCES:

- Janson's *ABACUS TO ZEUS* [vocab]
- Gardner's *ART THROUGH THE AGES*
- Janson's *HISTORY OF ART*

CLASS MEETING SCHEDULE:

DATE	TEXT	SUBJECT addressed in class this day	TURN IN by 4:30 pm this day
Jan. 15		Course Introduction	Skim text, find Blackboard
17	Ch. 1	<i>The Mycerinus Triad</i> (sculpture)	Sign up for report topic
22	Ch. 2	<i>Euphronios Crater</i> (painting) + 2 Reports	
24	Ch. 3	Greek Figure Sculpture + 3 Reports	
29	Ch. 4	Roman Figure Sculpture + 3 Reports	
31	Ch. 5	Greek & Roman Architecture: <i>Parthenon & Pantheon</i> + 2 Reports	
Feb. 05	Ch. 6	<i>The Junius Bassus Sarcophagus</i> (sculpture) + 2 Reports	
07	Ch. 7	Q <i>S. Vitale</i> : Early Christian Mosaics + 2 Reports	
12	Ch. 8	Giotto (painter): <i>Arena Chapel</i> frescoes + FILM #1: Master Builders	
14	Ch. 9	Duccio (painter): <i>The Maestà Altarpiece</i> + 2 Reports	
19	Ch. 10	Donatello (sculptor): <i>Judith and Holofernes</i> + 3 Reports	FILM NOTES #1 due
21		FILM #2: Bronze Sculpture (make-up screening Feb. 26 @ 3:30 pm)	
26	Ch. 11	Dürer (printmaker): Relief vs. Intaglio prints + 2 Reports	
28	Ch. 12	Q Leonardo (painter): <i>The Last Supper</i> + 2 Reports	
Mar. 04	Ch. 13	Michelangelo (sculptor): Three <i>Pietàs</i> + 3 Reports	FILM NOTES #2 due
06	Ch. 14	Titian (painter): <i>Pietà</i> + 2 Reports	
08-16		SPRING BREAK	
18		Caravaggio (painter): <i>The Contarelli Chapel</i> + 2 Reports	Last day to withdraw passing
20	Ch. 17	MIDTERM EXAM: 30 QUESTIONS, some drawings	
25	Ch. 19	Bernini (sculptor): <i>The Ecstasy of St. Teresa</i> + 3 Reports	
27	Ch. 21	Rembrandt (painter): Portraiture + 2 Reports	
Apr. 01	Ch. 23	Q David (painter): <i>The Death of Marat</i> + 2 Reports	
03	Ch. 25	Van Gogh (painter): <i>Night Café</i> + 3 Reports	
08	Ch. 26	Rodin (sculptor): <i>The Burghers of Calais</i> + 3 Reports	
10	Ch. 27	Sullivan (architect): the first skyscrapers + 3 reports	MUSEUM WORKSHEET due
15	Ch. 30	Pollock (painter): <i>Lavender Mist</i> + FILM #3: Jackson Pollock	
17		DIADELOSO (NO CLASS)	
22	Ch. 28	Picasso (painter): <i>The Studio</i> + 2 Reports	
24	Ch. 32	Q Smith (sculptor): <i>Cubi</i> series + 2 Reports	FILM NOTES #3 due
29		OPTION: Retake one quiz of your choice	
May 01		COMPREHENSIVE COURSE REVIEW + EVALUATION	Last day for grade updates
May 12	9:00 am	FINAL EXAM (per official schedule for T-TH 2:00 classes)	Comprehensive Exam



ART 1300: INTRODUCTION TO ART for non-majors

Dr. Karen Pope / Baylor, Spring 2008

IN-CLASS REPORT

- SIGN-UP CHART: Sign up early for best selection. Print legibly. Include phone numbers.
- Each report will be given on a pre-determined date by 3-student teams (per schedule below and noted in syllabus)
- Deliver PowerPoint via e-mail attachment by 9:00 on your scheduled report date; *earlier, for feedback and suggestions*
POINTS WILL BE DEDUCTED FOR LATENESS

PREPARATION

- Mark your calendar and connect with your teammates
- Plan your strategy for gathering info, organizing info, designing PowerPoint, presenting in class
- DISCOVERY—use books for information, internet for images; *get help in advance with pronunciation of names/terms*
COMPETENT PRONUNCIATION AND USE OF APPROPRIATE VOCABULARY WILL COUNT IN GRADE

GUIDELINES—PowerPoint (4 slides max):

- White background
- Label all images by title, date, dimensions (inches), location; no other text on slides except vocabulary

GUIDELINES—Content (include):

- Basics re key work—what, when, where, how, why
- Important other works and their relation to the key work
- Connections to textbook chapter topic, past works, any related works in Texas

EXECUTION—deliver clear, unified PowerPoint, relate to text, engage class; length: 10 minutes

GRADE—will be based on content, quality of presentation, and how closely and successfully these instructions are followed

REPORT SCHEDULE

DATE	TEXT	REPORT #1	REPORT #2	REPORT #3
Jan. 22	Ch. 2	Kleitias, <i>François Vase</i>	<i>Portland Vase</i> (British Museum)	
24	Ch. 3	<i>Delphic Charioteer</i> (Delphi)	<i>Apollo Belvedere</i> (Rome)	Apollonios, <i>Torso Belvedere</i> (Rome)
29	Ch. 4	<i>Parthian Frieze</i> (Vienna)	<i>Marcus Aurelius Equestrian Portrait</i>	<i>Column of Trajan</i> (Rome)
31	Ch. 5	<i>Temple of Zeus</i> (Olympia)	<i>Maison Carrée</i> (Nîmes)	
Feb. 05	Ch. 6	<i>Arch of Constantine</i> (Rome)	<i>Ste.—Foy Reliquary</i> (Conques)	
07	Ch. 7	<i>Battle of Issos</i> mosaic (Naples)	<i>Tomb of Galla Placidia</i> (Ravenna)	
14	Ch. 9	Cimabue, <i>Madonna & Child Enthroned</i> (Florence)	Memling, <i>Ursula Shrine</i> (Bruges)	
19	Ch. 10	Donatello, <i>Madonna & Child</i>	Ghiberti, <i>Florence Baptistery Doors</i>	Brunelleschi, <i>Duomo</i> (Florence)
26	Ch. 11	Raphael/Raimondi, <i>Judgment of Paris</i> (engraving)	Hokusai, <i>The Great Wave</i> (woodblock print)	
28	Ch. 12	Leonardo, <i>Virgin of the Rocks</i>	<i>Leonardo's Horse</i> (Milan + Michigan)	
Mar. 04	Ch. 13	Michelangelo, <i>Bacchus</i> (Florence)	Michelangelo, <i>David</i> (Florence)	Michelangelo, <i>Moses</i> (Rome)
06	Ch. 14	Titian, <i>Pesaro Altarpiece</i> (Venice)	Titian, <i>Venus of Urbino</i> (Florence)	
18	Ch. 17	Caravaggio, <i>Deposition</i> (Rome)	Caravaggio, <i>Judith & Holofernes</i>	
25	Ch. 19	Bernini, <i>Apollo and Daphne</i> (Rome)	Bernini, <i>The Fountain of the Moor</i> (Rome)	Bernini, <i>Baldacchino in St. Peter's</i>
27	Ch. 21	Rembrandt, <i>The Prodigal Son</i> (St. Petersburg)	Rembrandt, <i>Hundred-Guilder Print</i> [etching]	
Apr. 01	Ch. 23	David, <i>Oath of the Horatii</i> (Paris)	David, <i>Napoleon at St.-Bernard Pass</i> (Paris)	
03	Ch. 25	Millet, <i>The Sower</i> (Boston)	Gogh, <i>The Potato Eaters</i> (Amsterdam)	Gogh, <i>Starry Night</i> (New York)
08	Ch. 26	Rodin, <i>The Thinker</i>	Bourdelle, <i>Herakles the Archer</i>	Maillol, <i>Air</i> (Kimbell and elsewhere)
10	Ch. 27	Matt Harris, <i>Norwood Tower</i> (Austin)	Shreve-Lamb-Harmon, <i>Empire State Bldg.</i> (NYC)	Mies van der Rohe, <i>Seagram Bldg.</i> (New York)
22	Ch. 28	Picasso, <i>Man with a Pipe</i> (Fort Worth)	Picasso, <i>Guernica</i> (Madrid)	
24	Ch. 32	Calder, <i>Mobile</i> (National Gallery of Art, Wash., DC)	Gold, <i>Santa Monica III</i> (Baylor)	

MUSEUM WORKSHEET (to complete and turn in) (50 points)

DUE: April 10 (points deducted if late)

Select destination, use website to confirm location, hours (typically closed Mondays), admission (take student ID), what to expect.

Best nearby choices:

Fort Worth—	Kimbell Art Museum
Dallas—	Dallas Museum of Art
Houston—	Museum of Fine Arts
San Antonio—	San Antonio Museum of Art
Austin—	Blanton Museum of Art

Plan ahead, go with a friend. If transportation is a problem for you, speak up early. This assignment requires a museum collection with variety in parallel to Art 1300 course content. Your best opportunity may occur over Thanksgiving break.

Focus on museum's permanent collection and strive for variety.

FACTS ABOUT YOUR VISIT: Without staples or paper clips, include evidence of your visit (stamp, sticker, taped receipt)

Museum: _____ Date of visit: _____ Length of visit: _____

What collections (kinds of art, art historical periods) is this museum known for?

-
-
-
-
-

RESPONSES (continue on back of this sheet, if necessary—NO SECOND SHEET):

Select 5 works related to works studied in our course, describe in detail how they relate (e.g., date, medium, subject, style)

1. Artist: _____ Title: _____ Medium: _____ Date: _____

2. Artist: _____ Title: _____ Medium: _____ Date: _____

3. Artist: _____ Title: _____ Medium: _____ Date: _____

4. Artist: _____ Title: _____ Medium: _____ Date: _____

5. Artist: _____ Title: _____ Medium: _____ Date: _____

Your favorite work: _____ for more space, write on back



- Interesting information?
- Your questions about it?

Overall museum experience?